

## Cold Weather Energy Supplement for Milk Replacer

# Milk Energizer™

### Profile

Milk Energizer™ is a high-energy, instant-mixing dry fat source for increasing the total energy level of milk replacer. The energy from Milk Energizer will help keep calves in a positive energy balance during days of unpredictable cold weather or low feed intake.

### Benefits

1. Extra energy for consistent growth in cold weather
2. Reduces need for another feeding
3. Easy handling dry formula
4. Quick preparation, mixes well in liquid feed

### Guaranteed Analysis

Crude Protein, min	7.00%
Crude Fat, min	60.00%
Crude Fiber, max	0.20%
Moisture, max	2.00%
Ash, max	6.00%

### Ingredients

Animal Fat (Preserved with BHA and BHT), Condensed Whey, Condensed Whey Solubles, Dried Whey Protein Concentrate, Mono and Diglycerides of Edible Fats or Oils, Sodium Silico Aluminate, Artificial Flavor.

### Packaging

Bag: 25 lb  
 PIN: 312860  
 UPC: 715452312860  
 Per Pallet: 80 @ 2,000 lb

Bag: 50 lb (with Tag)  
 PIN: 30235  
 Per Pallet: 40 @ 2,000 lb



### Application

Calves reach critical temperature at approximately 59° F. Below this temperature, the calf uses energy for warmth rather than for growth.

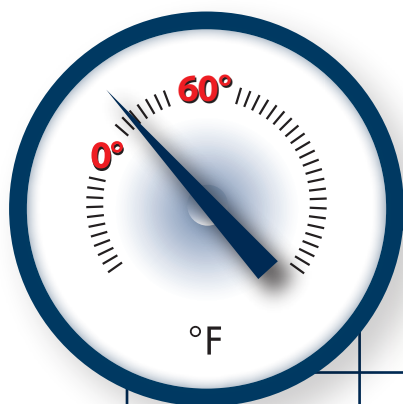
University research has concluded that calves exposed to ambient temperatures below 59° F will increase maintenance energy requirements by 10% for every 10° F decrease .

### Feeding Directions

According to ambient temperatures and calf weight as indicated on Cold Weather Feeding Chart, add Milk Energizer into milk replacer solution. Information on the Cold Weather Feeding Chart below is approximate.

Calf Weight	Temperature in Degrees Fahrenheit					
	50°	40°	30°	20°	10°	0°
60 lb	1.0	1.5	1.5	2.0	2.0	3.0
70 lb	1.0	1.5	2.0	2.0	2.5	3.0
80 lb	1.0	1.5	2.0	2.5	3.0	3.5
90 lb	1.0	2.0	2.0	3.0	3.5	4.0
100 lb	1.5	2.0	2.5	3.0	4.0	4.5
110 lb	1.5	2.0	3.0	3.5	4.0	5.0
120 lb	1.5	2.5	3.0	4.0	4.5	5.0
130 lb	1.5	2.5	3.0	4.0	5.0	5.0

# Milk Energizer™



Calf Weight	Temperature in Degrees Fahrenheit					
	50°	40°	30°	20°	10°	0°
	<b>Milk Energizer in Ounces, per Feeding</b>					
<b>60 lb</b>	<b>1.0</b>	<b>1.5</b>	<b>1.5</b>	<b>2.0</b>	<b>2.0</b>	<b>3.0</b>
<b>70 lb</b>	<b>1.0</b>	<b>1.5</b>	<b>2.0</b>	<b>2.0</b>	<b>2.5</b>	<b>3.0</b>
<b>80 lb</b>	<b>1.0</b>	<b>1.5</b>	<b>2.0</b>	<b>2.5</b>	<b>3.0</b>	<b>3.5</b>
<b>90 lb</b>	<b>1.0</b>	<b>2.0</b>	<b>2.0</b>	<b>3.0</b>	<b>3.5</b>	<b>4.0</b>
<b>100 lb</b>	<b>1.5</b>	<b>2.0</b>	<b>2.5</b>	<b>3.0</b>	<b>4.0</b>	<b>4.5</b>
<b>110 lb</b>	<b>1.5</b>	<b>2.0</b>	<b>3.0</b>	<b>3.5</b>	<b>4.0</b>	<b>5.0</b>
<b>120 lb</b>	<b>1.5</b>	<b>2.5</b>	<b>3.0</b>	<b>4.0</b>	<b>4.5</b>	<b>5.0</b>
<b>130 lb</b>	<b>1.5</b>	<b>2.5</b>	<b>3.0</b>	<b>4.0</b>	<b>5.0</b>	<b>5.0</b>

## Feeding Directions

According to ambient temperatures and calf weight as indicated on Cold Weather Feeding Chart, add Milk Energizer into milk replacer solution. Information on the Cold Weather Feeding Chart above is approximate.

Manufacturer & Supplier  
**MILKSPECIALTIES**  
 GLOBAL  
 ANIMAL NUTRITION

Providing Science Based Solutions